

RAB Mount

Similar in design to the RA and RAEM range, the RAB uses rubber in shear and compression for optimum stiffness characteristics and horizontal stability. Especially effective on small 1, 2 and 3 cylinder diesel engines where the special compound employed provides effective isolation of vibration while eliminating much of the excessive movement normally associated with 1-3 zinc plated cylinder engines.

Advantages:

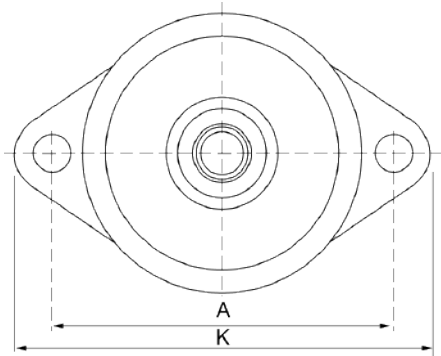
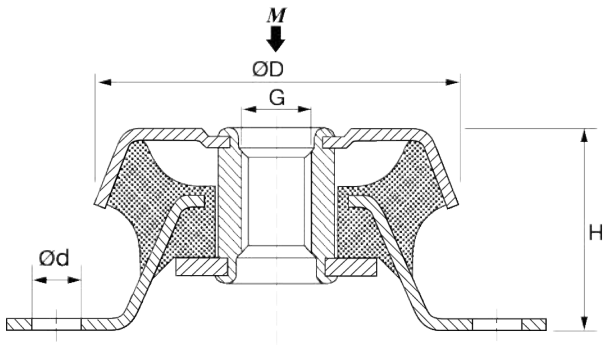
- Rubber features are utilized effectively combining compression and shear
- Tight Tolerances on dynamic stiffness rate for accurate vibration calculations
- Loading rating options, 10-130 kg
- Corrosion protected to cope with arduous environments on land or marine applications
- Fitted as standard with an integral fail-safe device with resilient stop, making the RA ideal for use in mobile applications
- Domed shape cover to protect against oil contamination
- The RAB mounts can accommodate occasional vertical shock loads up to 5G and shock loads up to 2G in other directions.

Typical applications:

- Pumps
- Diesel engines
- Marine and Industrial gensets
- Emergency power packs



Technical Drawing



Product Data

REFERENCE	DRAWING NO.	PART NO.	DIMENSIONS (mm)						MAX. LOAD (N)	MAX. BOLT TORQUE (Nm)
			ØD	A	H	K	Ød	G		
RAB 3	17-4004-1	10-00180	63	76	35	93,5	8,5	M12	700	25
RAB 2	17-4141-1	10-00179	63	76	35	93,5	8,5	M12	1050	25
RAB 0	17-4092-1	10-00178	63	76	35	93,5	8,5	M12	1300	25