

# Metacone

The metacone product range is designed for high load capacity with relatively large static deflections. The high loading for a given size is achieved by utilizing the rubber to best advantage in shear and compression. Typically the mountings are assembled with overload and rebound washers to control and limit movement of the suspended equipment under shock loads. Centre fixing bolts should be torque tightened to the recommended values.

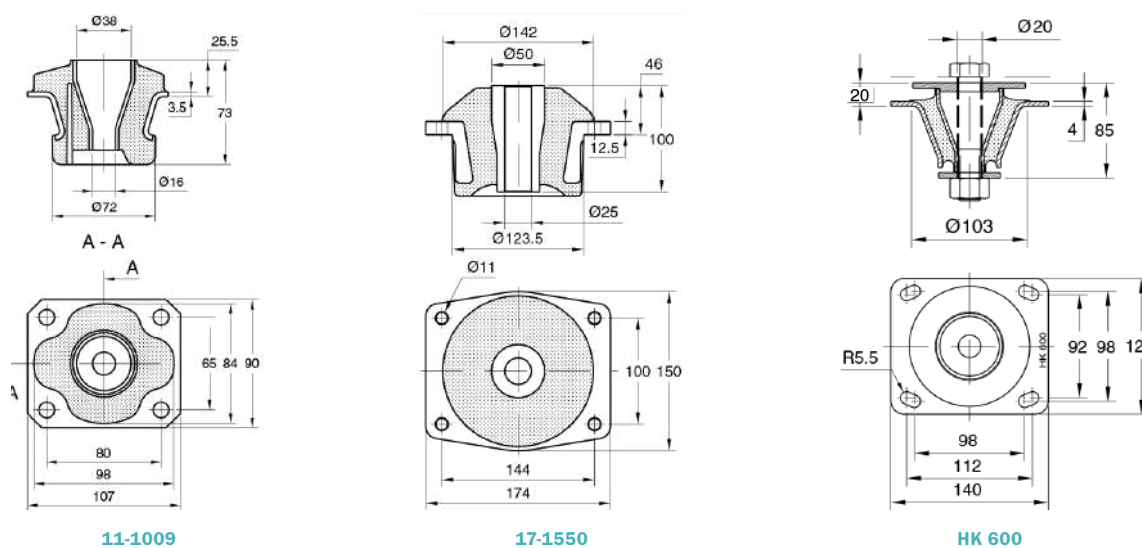
Their compact fail-safe design is available for a wide range of loadings, with in some cases, alternative fixings. Cut-outs in rubber sections on various sizes provide different vertical/horizontal stiffness ratio.

### Typical applications:

- Off-highway and road vehicle engines
- Vehicle cabs
- Oil tanks/ tankers



## Technical Drawing



## Product Data

DRAWING NO.	PART NO.	HARDNESS (IRHD)	AXIAL (Z)		RADIAL (X)		RADIAL (Y)		BOLT SIZE	MAX. BOLT TORQUE (Nm)	TOP WASHER PART NO.	BOTTOM WASHER PART NO.	WEIGHT (Kg)
			STIFFNESS (N/mm)	MAX. LOAD (N)	STIFFNESS (N/mm)	MAX. LOAD (N)	STIFFNESS (N/mm)	MAX. LOAD (N)					
11-1009	10-00192	45	196	1400	192	300	520	8500	M16	75	20-00532	20-00532	0,59
	10-00193	55	300	2000	295	450	875	14500					0,59
17-1550	10-02605	45	588	7200	1400	3150	1400	31500	M24	260	20-00534	20-00534	4,4
	10-02271	60	995	12500	2630	5900	2630	59000					4,4
17-4040	10-00190	HK 600-40	1500	6850	2750	3050	2750	30500	M20	160	20-00643	20-00644	1
	10-00191	HK 600-60	2650	12600	4700	5250	4700	52500					1
	10-00064	HK 600-70	3900	18500	6900	7750	6900	77500					1

# Metacone

The metacone product range is designed for high load capacity with relatively large static deflections. The high loading for a given size is achieved by utilizing the rubber to best advantage in shear and compression. Typically the mountings are assembled with overload and rebound washers to control and limit movement of the suspended equipment under shock loads. Centre fixing bolts should be torque tightened to the recommended values.

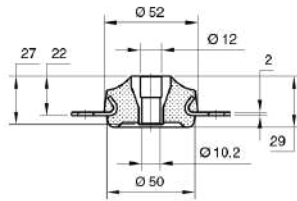
Their compact fail-safe design is available for a wide range of loadings, with in some cases, alternative fixings. Cut-outs in rubber sections on various sizes provide different vertical/horizontal stiffness ratio.

## Typical applications:

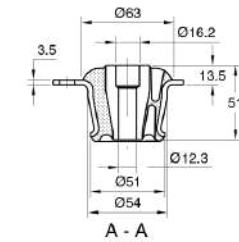
- Off-highway and road vehicle engines
- Vehicle cabs
- Oil tanks/ tankers



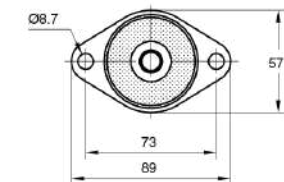
## Technical Drawing



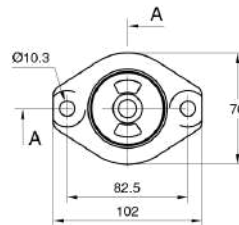
17-0379



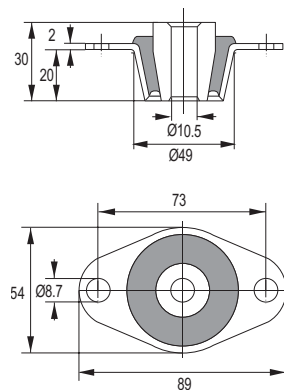
17-1691



057 18 001



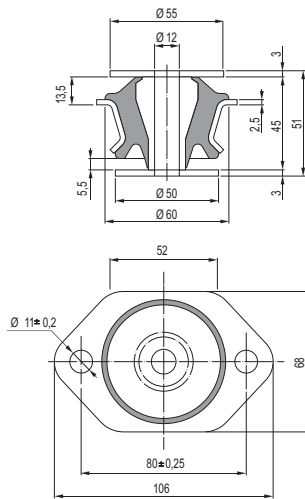
17-0248 (solid)  
17-0241 (x cut out)  
17-0189 (solid)



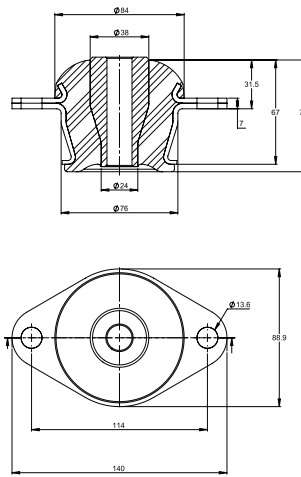
Product Data

DRAWING NO.	PART NO.	HARDNESS (IRHD)	AXIAL (Z)		RADIAL (X)		RADIAL (Y)		BOLT SIZE	MAX. BOLT TORQUE (Nm)	TOP WASHER PART NO.	BOTTOM WASHER PART NO.	WEIGHT (Kg)
			STIFFNESS (N/mm)	MAX. LOAD (N)	STIFFNESS (N/mm)	MAX. LOAD (N)	STIFFNESS (N/mm)	MAX. LOAD (N)					
17-0379	10-00402	45	97	350	300	320	300	320	M10	25	20-00531	20-00531	0,12
	10-00404	60	190	700	520	650	520	650					
17-1691	10-00566	45	215	720	626	600	1400	1300	M12	90	20-00535	20-00536	0,44
	10-00567	60	450	1440	1252	1150	2800	2600					
057 18 001	90905	50	160	550	1000	1000	1000	1000	M10	25	49056605	49056605	0,14
	90810	65	380	1300	1800	1800	1800	1800					
	91056	75	580	2000	2200	2200	2200	2200					
17-0241	10-00374	45	166	620	460	500	920	950	M12	40	20-00529	10-03666	0,18
	10-00375	60	333	1220	920	950	1840	1900					
17-0248	10-00379	45	250	950	1600	1950	1600	1950	M12	40	20-00529	10-03666	0,19
	10-00380	60	500	1900	3250	4000	3250	4000					
17-0189	10-00365	45	428	1450	1205	1250	1205	1250	M12	40	20-00529	10-03666	0,28
	10-00367	70	1180	4000	3550	3600	3550	3600					
17-4039	10-01119	HK 60-40	200	900	520	900	520	900	M12	40	20-01103	20-00416	0,24
	10-01122	HK 60-50	256	1150	760	1150	760	1150					
	10-01120	HK 60-60	405	1800	1200	1800	1200	1800					
	10-01121	HK 60-70	560	2500	1760	2500	1760	2500					

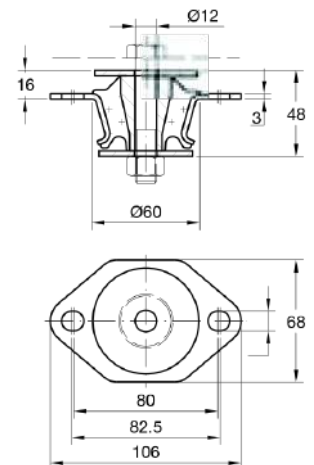
## Technical Drawing



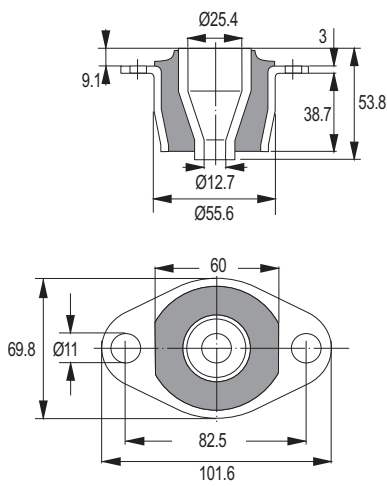
057 18 816



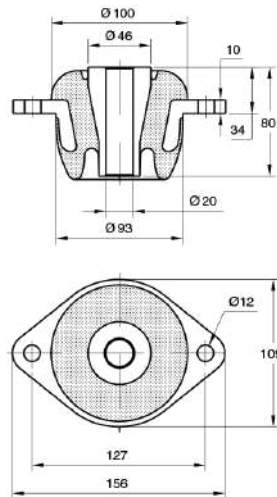
17-1032



HK 60



057 18 226



17-1843

## Product Data

DRAWING NO.	PART NO.	HARDNESS (IRHD)	AXIAL (Z)		RADIAL (X)		RADIAL (Y)		BOLT SIZE	MAX. BOLT TORQUE (Nm)	TOP WASHER PART NO.	BOTTOM WASHER PART NO.	WEIGHT (kg)
			STIFFNESS (N/mm)	MAX. LOAD (N)	STIFFNESS (N/mm)	MAX. LOAD (N)	STIFFNESS (N/mm)	MAX. LOAD (N)					
057 18 226	93947	50	480	2300	2100	1200	2100	1200	M12	40	97138	93950 / 93127	0,31
	93948	65	990	5000	4200	2000	4200	2000					
	93949	75	1400	6000	12000	9000	12000	9000					
057 18 816	49047034	50	240	700	640	1000	640	1000	M12	65	included	included	0,4
	49047035	65	460	1400	1200	1800	1200	1800					
	49047036	75	720	2200	1800	2700	1800	2700					
17-1032	10-02905	45	492	2500	490	750	975	750	M16	135	20-00532	20-00532	1
	10-02977	60	860	4700	975	1500	1950	1500					
17-1843	20-02529	45	520	3200	870	1400	870	1400	M20	160	20-00533	20-00533	1,7
	10-03505	50	660	3800	1100	1800	1100	1800					
	10-00610	60	1060	6000	2800	4500	2800	4500					

# Metacone

The metacone product range is designed for high load capacity with relatively large static deflections. The high loading for a given size is achieved by utilizing the rubber to best advantage in shear and compression. Typically the mountings are assembled with overload and rebound washers to control and limit movement of the suspended equipment under shock loads. Centre fixing bolts should be torque tightened to the recommended values.

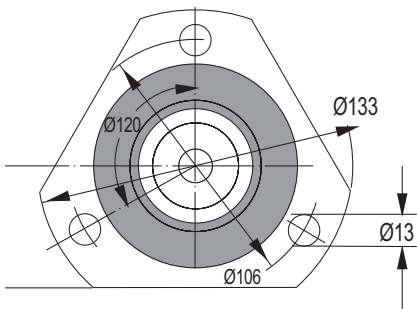
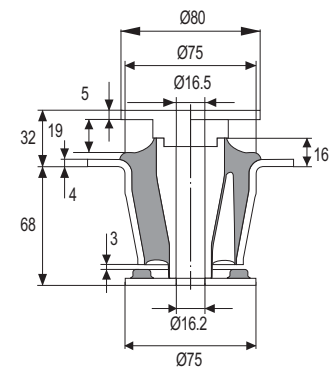
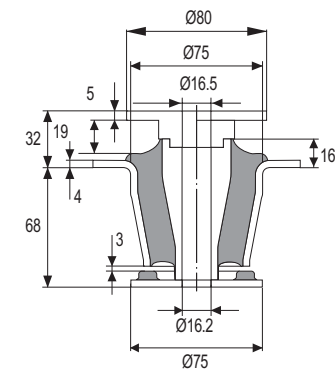
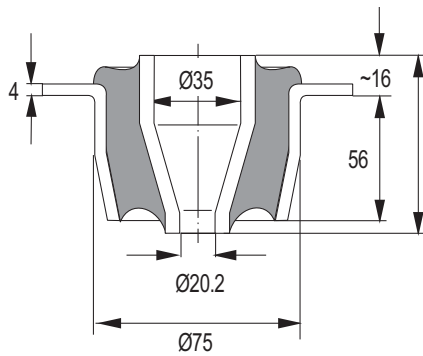
Their compact fail-safe design is available for a wide range of loadings, with in some cases, alternative fixings. Cut-outs in rubber sections on various sizes provide different vertical/horizontal stiffness ratio.

**Typical applications:**

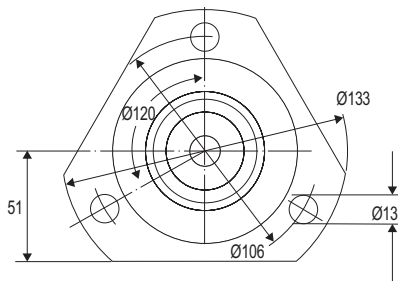
- Off-highway and road vehicle engines
- Vehicle cabs
- Oil tanks/ tankers



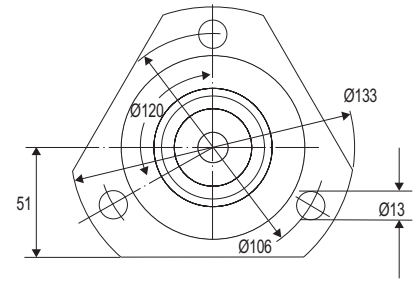
## Technical Drawing



057 18 013



057 18 756



057 18 757

## Product Data

DRAWING NO.	PART NO.	HARDNESS (IRHD)	AXIAL (Z)		RADIAL (X)		RADIAL (Y)		BOLT SIZE	MAX. BOLT TORQUE (Nm)	TOP WASHER PART NO.	BOTTOM WASHER PART NO.	WEIGHT (kg)
			STIFFNESS (N/mm)	MAX. LOAD (N)	STIFFNESS (N/mm)	MAX. LOAD (N)	STIFFNESS (N/mm)	MAX. LOAD (N)					
057 18 013	90697	50	670	3700	6700	13400	6700	13400	M20	220	97141	511081 / 90819 / 90831	0,99
	90877	65	1500	8700	10000	19500	9300	19500					
	90849	75	2400	13700	24000	48000	24000	48000					
057 18 756	511906	50	600	4000	1800	5500	1800	5500	M16	200	511927	511928	0,96
	2129306	60	860	7000	3200	9500	3200	9500					
	2129307	65	1510	8000	3800	11500	3800	11500					
	2129308	70	1650	10000	4500	13500	4500	13500					
	2129309	75	1900	12000	5200	15500	5200	15500					
057 18 757	2129310	50	550	4400	2900	8800	1600	4800	M16	200	511927	511928	0,95
	2129311	60	730	6000	3600	10800	2300	6800					
	2129312	65	1150	8500	4300	12800	3000	8800					
	2129313	70	1450	11600	5000	14800	3600	10800					
	2129314	75	1800	14400	5600	16800	4300	12800					

# Metacone

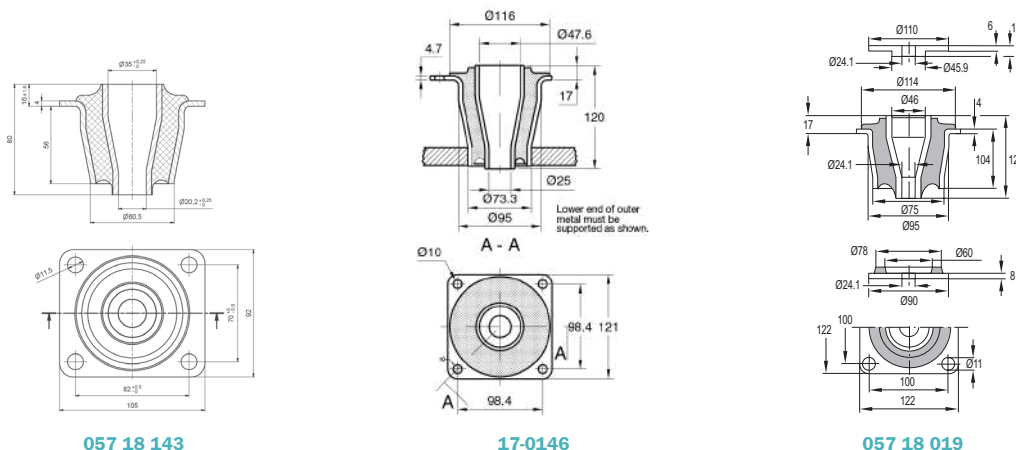
The metacone product range is designed for high load capacity with relatively large static deflections. The high loading for a given size is achieved by utilizing the rubber to best advantage in shear and compression. Typically the mountings are assembled with overload and rebound washers to control and limit movement of the suspended equipment under shock loads. Centre fixing bolts should be torque tightened to the recommended values. Their compact fail-safe design is available for a wide range of loadings, with in some cases, alternative fixings. Cut-outs in rubber sections on various sizes provide different vertical/horizontal stiffness ratio.

**Typical applications:**

- Off-highway and road vehicle engines
- Vehicle cabs
- Oil tanks/ tankers



## Technical Drawing



## Product Data

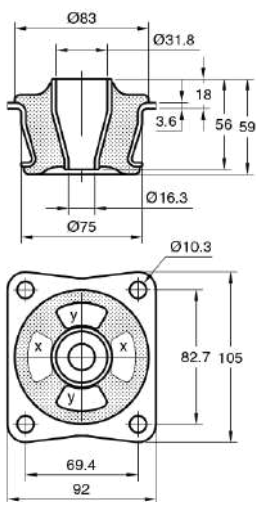
DRAWING NO.	PART NO.	HARDNESS (IRHD)	AXIAL (Z)		RADIAL (X)		RADIAL (Y)		BOLT SIZE	MAX. BOLT TORQUE (Nm)	TOP WASHER PART NO.	BOTTOM WASHER PART NO.	WEIGHT (kg)
			STIFFNESS (N/mm)	MAX. LOAD (N)	STIFFNESS (N/mm)	MAX. LOAD (N)	STIFFNESS (N/mm)	MAX. LOAD (N)					
057 18 143	92792	50	600	3500	3000	7400	3000	7400	M20	220	97141	90819 / 90831	1,11
	92793	65	1220	7200	4800	12000	4800	12000					
17-0146	10-00360	45	1400	9500	5900	8400	5900	8400	M24	200	20-00527	10-03862	2
	10-00361	60	2860	17000	11800	16800	11800	16800					
057 18 019	49014538	45 (D)	1300	8500	6500	4300	6500	4300	M24	535	97142	90501	2,15
	91430	50 (C)	1500	10300	6400	9600	6400	9600					
	90867	55 (B)	2100	13400	10500	7000	10500	7000					
	60034212	60 (A)	2300	14700	11500	7700	11500	7700					
	90491	65 (E)	3400	23000	17000	11300	17000	11300					
	91009	75 (F)	4200	30900	21000	14000	21000	14000					
92346	80 (G)	5800	48000	29000	19300	29000	19300						

# Metacone

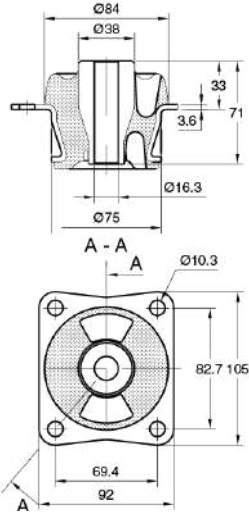
The metacone product range is designed for high load capacity with relatively large static deflections. Their compact fail-safe design is available for a wide range of loadings, with in some cases, alternative fixings. Cut-outs in rubber sections on various sizes provide different vertical/horizontal stiffness ratio.



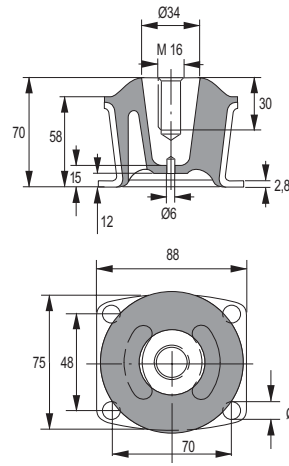
## Technical Drawing



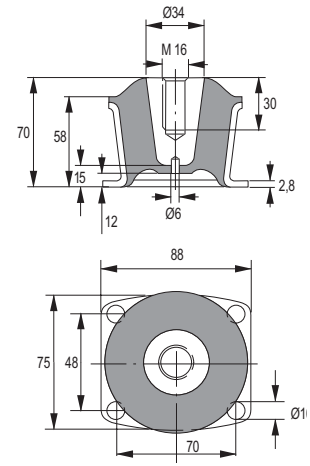
17-0277 (x cut out)  
17-0311 (y cut out)  
17-0341 (solid)



17-1865



057 18 065



057 18 123

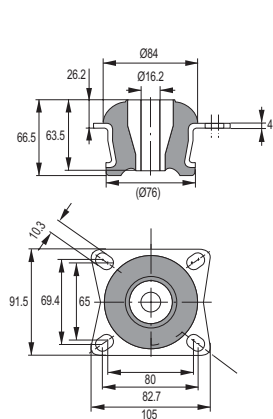
## Product Data

DRAWING NO.	PART NO.	HARDNESS (IRHD)	AXIAL (Z)		RADIAL (X)		RADIAL (Y)		BOLT SIZE	MAX. BOLT TORQUE (Nm)	TOP WASHER PART NO.	BOTTOM WASHER PART NO.	WEIGHT (kg)
			STIFFNESS (N/mm)	MAX. LOAD (N)	STIFFNESS (N/mm)	MAX. LOAD (N)	STIFFNESS (N/mm)	MAX. LOAD (N)					
17-0277	10-00385	45	207	1250	620	950	410	650	M16	75	20-00773	20-00532	0,56
	10-00387	60	378	2300	1470	2250	740	1150					
17-0311	10-00391	45	207	1250	325	550	655	1050	M16	75	20-00773	20-00532	0,58
	10-00392	60	378	2200	650	1050	1310	2150					
17-1865	10-00615	55	300	1800	1200	1850	600	900	M16	135	20-00532	20-00532	0,86
17-0341	10-00394	45	266	1600	866	1400	866	1400	M16	75	20-00773	20-00532	0,54
	10-00395	60	540	3000	1732	2800	1732	2800					
	10-00396	70	758	4300	2300	3750	2300	3750					
057 18 065	90822	50	240	1700	650	1000	330	500	M16	63	49032678	-	0,68
	92448	75	880	6000	1750	2600	1100	1700					
057 18 123	93270	50	520	3500	1000	1500	1000	1500	M16	63	49032678	-	0,7
	91790	70	1100	6000	1700	2600	1700	2600					
057 18 228	93641	40	210	1600	440	650	180	300	M16	126	49032678	49026836	0,86
	93642	50	400	3100	890	1350	360	550					
	91405	70	600	6500	600	2400	700	1050					

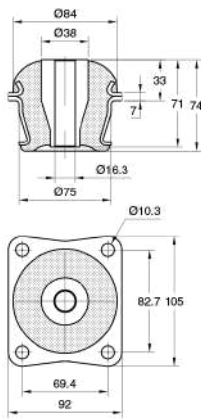


DRAWING NO.	PART NO.	HARDNESS (IRHD)	AXIAL (Z)		RADIAL (X)		RADIAL (Y)		BOLT SIZE	MAX. BOLT TORQUE (Nm)	TOP WASHER PART NO.	BOTTOM WASHER PART NO.	WEIGHT (kg)
			STIFFNESS (N/mm)	MAX. LOAD (N)	STIFFNESS (N/mm)	MAX. LOAD (N)	STIFFNESS (N/mm)	MAX. LOAD (N)					
057 18 075	93385	50	630	4100	800	1200	800	1200	M16	126	49032678	49026836	0,93
	91829	65	1100	8500	1400	2100	1400	2100					
	90863	75	1500	13000	2240	3360	2240	3360					

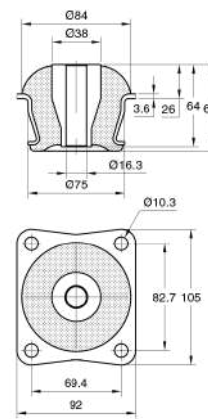
### Technical Drawing



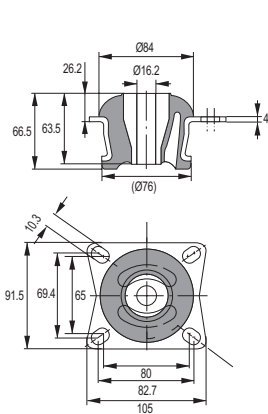
057 18 075



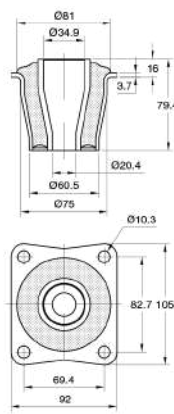
17-0391



17-0566



057 18 228



17-1227

### Product Data

DRAWING NO.	PART NO.	HARDNESS (IRHD)	AXIAL (Z)		RADIAL (X)		RADIAL (Y)		BOLT SIZE	MAX. BOLT TORQUE (Nm)	TOP WASHER PART NO.	BOTTOM WASHER PART NO.	WEIGHT (kg)
			STIFFNESS (N/mm)	MAX. LOAD (N)	STIFFNESS (N/mm)	MAX. LOAD (N)	STIFFNESS (N/mm)	MAX. LOAD (N)					
17-0566	10-00433	45	389	2000	750	1250	750	1250	M16	135	20-00532	20-00532	0,82
	10-00434	60	690	3800	1500	2450	1500	2450					
	10-00435	70	905	5250	2300	3750	2300	3750					
17-0391	10-00409	35	328	1950	737	1150	737	1150	M16	135	20-00532	20-00532	1,1
	10-00411	45	492	2900	1105	1700	1105	1700					
	10-00414	60	765	5000	2185	3350	2185	3350					
	10-00415	70	1325	6100	3470	5300	3470	5300					
17-1227	10-00723	50	990	6350	7600	8500	7600	8500	M20	180	20-00528	10-03707	1,1
	10-00460	60	1562	10000	12000	13500	12000	13500					
	10-02575	70	2300	14700	17640	19700	17640	19700					

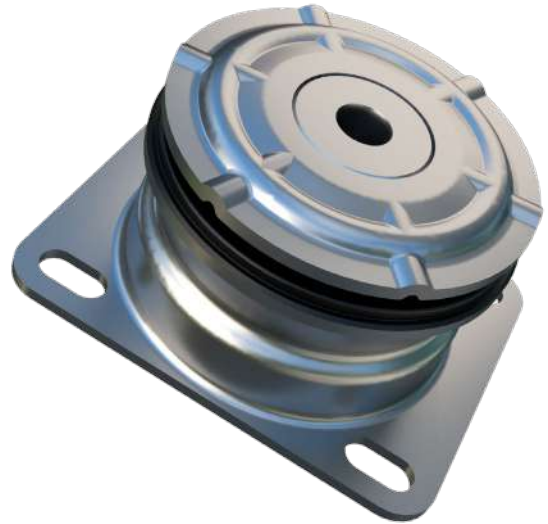
# Metacone

The metacone product range is designed for high load capacity with relatively large static deflections. The high loading for a given size is achieved by utilizing the rubber to best advantage in shear and compression. Typically the mountings are assembled with overload and rebound washers to control and limit movement of the suspended equipment under shock loads. Centre fixing bolts should be torque tightened to the recommended values.

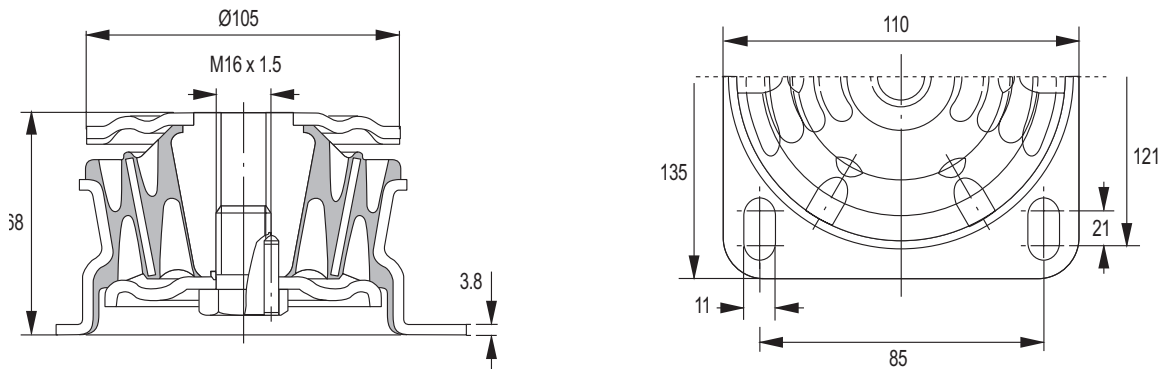
Their compact fail-safe design is available for a wide range of loadings, with in some cases, alternative fixings. Cut-outs in rubber sections on various sizes provide different vertical/horizontal stiffness ratio.

## Typical applications:

- Off-highway and road vehicle engines
- Vehicle cabs
- Oil tanks/ tankers



## Technical Drawing



057 18 224 (VOIDS)  
057 18 220 (SOLID)

## Product Data

DRAWING NO.	PART NO.	HARDNESS (IRHD)	AXIAL (Z)		RADIAL (X)		RADIAL (Y)		BOLT SIZE	MAX. BOLT TORQUE (Nm)	TOP WASHER PART NO.	BOTTOM WASHER PART NO.	WEIGHT (kg)
			STIFFNESS (N/mm)	MAX. LOAD (N)	STIFFNESS (N/mm)	MAX. LOAD (N)	STIFFNESS (N/mm)	MAX. LOAD (N)					
057 18 224	91491	65	330	5530	1400	2800	700	1400	M16x1.5	230	included	-	1,84
	91381	75	560	8960	2200	4400	1100	2200					
057 18 220	91067	40	210	1100	750	1500	750	1500	M16x1.5	230	included	-	3,21
	91374	50	430	2200	1100	2200	1100	2200					
	93876	65	710	6200	1700	3400	1700	3400					
	91230	75	1050	8500	2600	5200	2600	5200					
	49018753	80	1500	10000	3900	7800	3900	7800					

# Metacone

The metacone product range is designed for high load capacity with relatively large static deflections. The high loading for a given size is achieved by utilizing the rubber to best advantage in shear and compression. Typically the mountings are assembled with overload and rebound washers to control and limit movement of the suspended equipment under shock loads. Centre fixing bolts should be torque tightened to the recommended values.

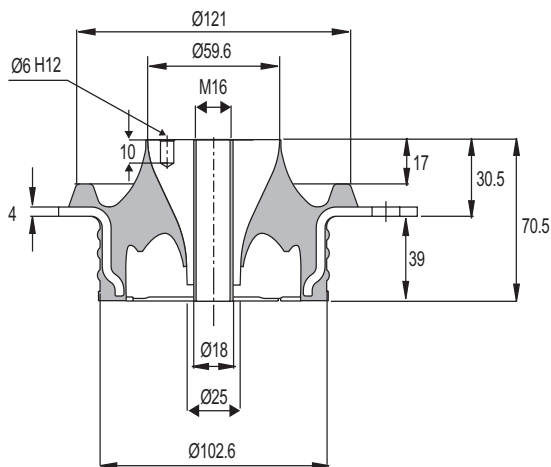
Their compact fail-safe design is available for a wide range of loadings, with in some cases, alternative fixings. Cut-outs in rubber sections on various sizes provide different vertical/horizontal stiffness ratio.

Typical applications:

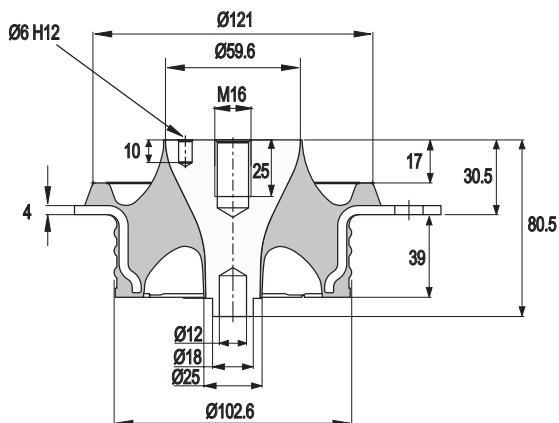
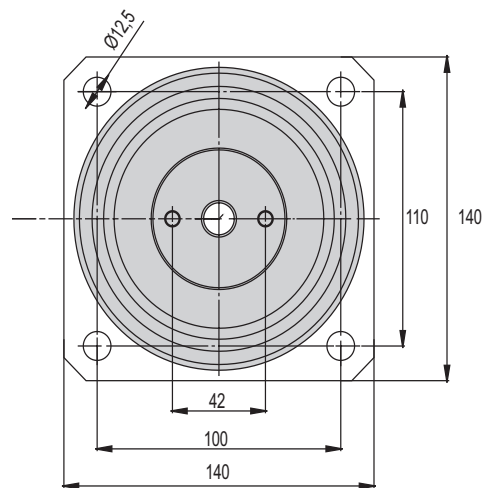
- Off-highway and road vehicle engines
- Vehicle cabs
- Oil tanks/ tankers



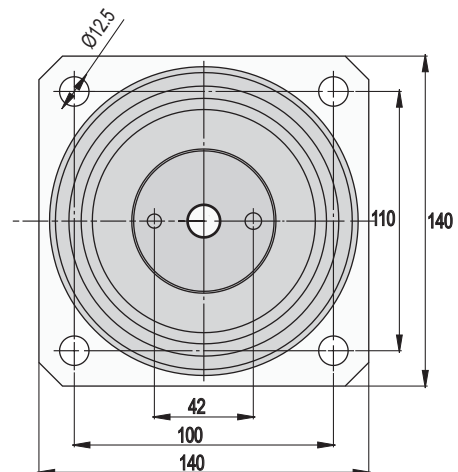
## Technical Drawing



057 18 801 (SOLID)  
BOLT STYLE: THROUGH



057 18 801 (SOLID)  
BOLT STYLE: BLIND



## Product Data

DRAWING NO.	PART NO.	HARDNESS (IRHD)	AXIAL (Z)		RADIAL (X)		RADIAL (Y)		BOLT STYLE	BOLT SIZE	MAX BOLT TORQUE (Nm)	TOP WASHER PART NO.	BOTTOM WASHER PART NO.
			STIFFNESS (N/mm)	MAX LOAD (N)	STIFFNESS (N/mm)	MAX LOAD (N)	STIFFNESS (N/mm)	MAX LOAD (N)					
057 18 801	49038287	40	200	2100	270	1400	270	1400	BLIND	M16	230	-	-
	60901350								THRO'				-
	60901357								THRO'				included
	49038288	50	240	2500	350	1800	350	1800	BLIND	M16	230	-	-
	60901351								THRO'				-
	60901358								THRO'				included
	49038289	50	320	3100	450	2300	450	2300	BLIND	M16	230	-	-
	60901352								THRO'				-
	60901359								THRO'				included
	49038290	55	340	3500	600	3000	600	3000	BLIND	M16	230	-	-
	60901353								THRO'				-
	60901360								THRO'				included
	49038291	60	450	4700	830	4200	830	4200	BLIND	M16	230	-	-
	60901354								THRO'				-
	60901361								THRO'				included
	49038302	65	520	5500	1040	5200	1040	5200	BLIND	M16	230	-	-
	60901355								THRO'				-
	60901362								THRO'				included
	60901415	70	600	6700	1100	5500	1100	5500	BLIND	M16	230	-	-
60901356	THRO'								-				
60901363	THRO'								included				
057 18 799	49038272	40	300	3000	500	2500	500	2500	BLIND	M16	230	-	-
	60901634								THRO'				-
	60900310								THRO'				included
	49038273	50	380	3700	650	3300	650	3300	BLIND	M16	230	-	-
	60901635								THRO'				-
	60901745								THRO'				included
	49038274	50	450	4600	800	4000	800	4000	BLIND	M16	230	-	-
	60901636								THRO'				-
	60901746								THRO'				included
	49038275	55	550	5600	1100	5500	1100	5500	BLIND	M16	230	-	-
	60901637								THRO'				-
	60901747								THRO'				included
	49038276	60	700	7500	1500	7500	1500	7500	BLIND	M16	230	-	-
	60901638								THRO'				-
	60901748								THRO'				included
	49038277	65	780	8300	1550	7800	1550	7800	BLIND	M16	230	-	-
	60901639								THRO'				-
	60901749								THRO'				included
	60901381	70	900	9900	1950	9800	1950	9800	BLIND	M16	230	-	-
60901640	THRO'								-				
60900072	THRO'								included				

# Metacone

The metacone product range is designed for high load capacity with relatively large static deflections. The high loading for a given size is achieved by utilizing the rubber to best advantage in shear and compression. Typically the mountings are assembled with overload and rebound washers to control and limit movement of the suspended equipment under shock loads. Centre fixing bolts should be torque tightened to the recommended values.

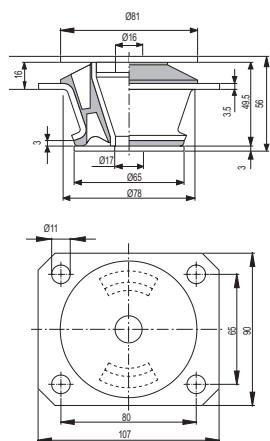
Their compact fail-safe design is available for a wide range of loadings, with in some cases, alternative fixings. Cut-outs in rubber sections on various sizes provide different vertical/horizontal stiffness ratio.

### Typical applications:

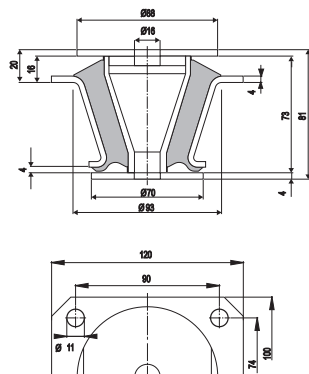
- Off-highway and road vehicle engines
- Vehicle cabs
- Oil tanks/tankers



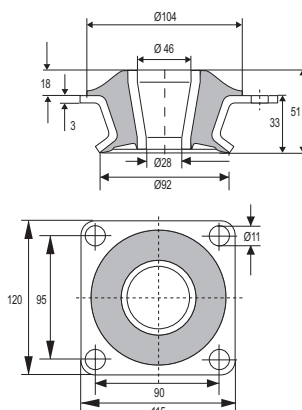
## Technical Drawing



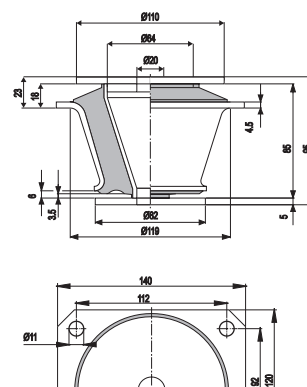
057 18 805 (VOIDS)  
057 18 804 (SOLID)



057 18 806



057 18 060



057 18 807

## Product Data

DRAWING NO.	PART NO.	HARDNESS (IRHD)	AXIAL (Z)		RADIAL (X)		RADIAL (Y)		BOLT SIZE	MAX. BOLT TORQUE (Nm)	TOP WASHER PART NO.	BOTTOM WASHER PART NO.	WEIGHT (kg)
			STIFFNESS (N/mm)	MAX. LOAD (N)	STIFFNESS (N/mm)	MAX. LOAD (N)	STIFFNESS (N/mm)	MAX. LOAD (N)					
057 18 804	49041359	50	490	1400	1100	3300	1100	3300	M16	95	included	included	0,79
	49041360	65	900	2800	2200	6600	2200	6600					
	49041361	75	1300	4000	3300	8000	3300	8000					
057 18 805	49075604	40	220	900	880	2700	400	1200	M16	95	included	included	0,77
	49041362	50	290	1000	1100	3300	500	1500					
	49075605	60	520	1500	1500	4800	690	2100					
	49041363	65	540	1600	1900	6000	860	2600					
	49041364	75	950	2200	3300	8000	1200	3600					

DRAWING NO.	PART NO.	HARDNESS (IRHD)	AXIAL (Z)		RADIAL (X)		RADIAL (Y)		BOLT SIZE	MAX. BOLT TORQUE (Nm)	TOP WASHER PART NO.	BOTTOM WASHER PART NO.	WEIGHT (kg)
			STIFFNESS (N/mm)	MAX. LOAD (N)	STIFFNESS (N/mm)	MAX. LOAD (N)	STIFFNESS (N/mm)	MAX. LOAD (N)					
057 18 806	49041365	50	1200	2500	1265	2530	1265	2530	M16	95	included	included	1,39
	49041366	65	2100	4200	2145	4290	2145	4290					
	49041367	75	3800	7500	3780	7560	3780	7560					
057 18 060	93900	40	230	2400	560	2200	560	2200	M16	150	97140	97139	0,95
	91479	50	360	3800	870	3400	870	3400					
	90465	65	660	7000	1400	5600	1400	5600					
	476214	75	830	9000	2100	8400	2100	8400					
	90821	85	1290	14000	2000	11000	2000	11000					
057 18 807	49041368	50	1400	7000	1430	7150	1430	7150	M20	185	included	included	2,1
	49041369	65	2400	12000	2470	12350	2470	12350					
	49041370	75	3800	19000	4050	20250	4050	20250					