

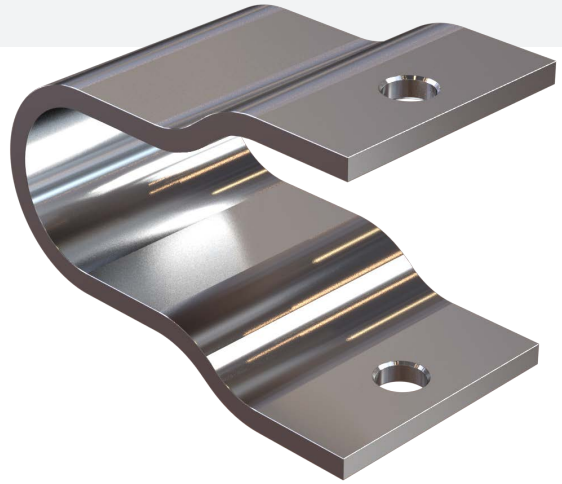
J-Type Deck

PRODUCT DATA

Trelleborg AVS defense portfolio includes both “deck” and “bulkhead” versions of J-Type shock mounts. Like other shock mounts, all J-Type shock mounts are registered under NATO Stock Numbers (NSN). Trelleborg AVS-NL CAGE code is H0040.

The J-Type, also known as the “yielding strap”, cost-effectively protects equipment against shock. It is a curved steel strap designed to yield a predetermined load in any direction. The symmetric version of the J-Type is often referred to as the “regular” or “deck” version. The asymmetric version of the J-Type is often referred to as the “bulkhead” version because of its shape that requires less installation space. These J-Types are highly efficient shock isolators as their lifetime is limited by the event of the shock itself and their replacement inexpensive. After being exposed to shock the J-Type needs to be replaced to re-ensure protection of the equipment.

The J-Type is the right solution for shock mount applications when realignment with other equipment or the vessel's structure after impact is not required and vibration and sound isolation are also of minor importance. The J-Type is often used for non-vital equipment without a vibration source, such as switch cabinets and electronic equipment.



CHARACTERISTICS

- Steel strap, non-magnetic versions available
- Symmetric “deck” and asymmetric “bulkhead” version
- Captive design
- Suitable for high temperatures
- Nominal load range: 2 to 135 kg
- Relative high damping grade
- Cost-effective, single-use shock solution
- Easy installation, equipped with locking plate

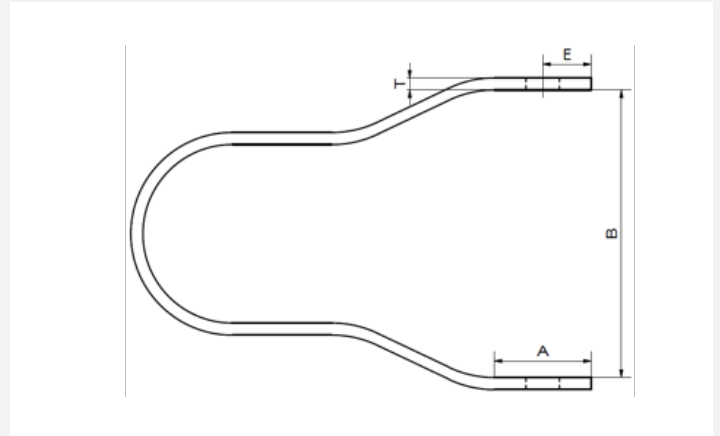
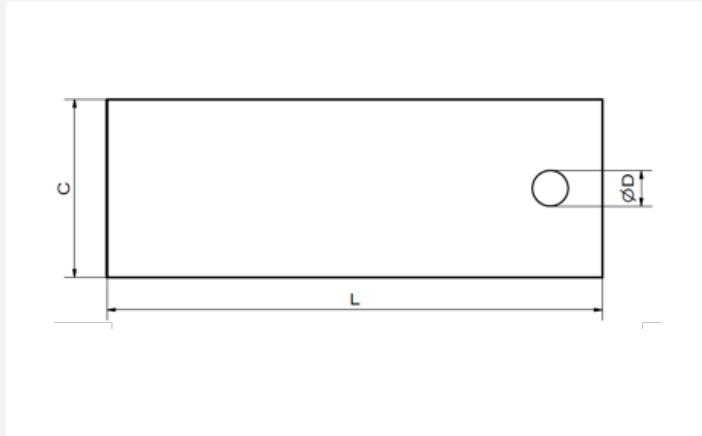
J-TYPE STANDARD VERSION

PART NO.	NATO STOCK NUMBER	CLASS BR 3021	CLASS DIN 95408	DIMENSIONS (MM)						
				L	T	A	B	C	ØD	E
116100J03A	5430-99-539-6795	03A	J1	151	2	38	95	55	9	19
116100J02A	5430-99-539-6794	02A	J2	152	3	38	95	55	9	19
116100J01A	5430-99-539-6793	01A	J3	153	4	38	95	55	11	19
116100J1A	5430-99-539-2588	1A	J4	154	5	38	95	70	11	19
116100J2A	5430-99-539-2589	2A	J5	154	5	38	95	90	11	19
116100J3A	5430-99-539-2590	3A	J6	155	6	38	95	85	13	19
116100J4A	5430-99-539-2591	4A	J7	155	6	38	95	105	13	19
116100J5A	5430-99-539-2592	5A	J8	157	8	38	95	95	17	19
116100J6A	5430-99-539-2593	6A	J9	159	10	38	95	85	21	19

PART NO.	STATIC LOAD RANGE (KG)	PERMISSIVE DEFORMATION (MM)			MAX TRANSMITTED ACCELERATION AT STATIC LOAD (M/S ²)	
		X	Y	Z	MIN. MASS	MAX. MASS
116100J03A	2 - 5	82	82	82	190	90
116100J02A	5 - 10	82	82	82	190	112
116100J01A	10 - 20	79	79	79	140	58
116100J1A	20 - 35	79	79	79	100	50
116100J2A	35 - 45	79	79	79	100	50
116100J3A	45 - 60	75	75	75	100	50
116100J4A	60 - 80	75	75	75	100	50
116100J5A	80 - 115	70	70	70	100	80
116100J6A	115 - 180	64	64	64	180	110

J-Type Deck

TECHNICAL DRAWING



J-TYPE YS-SS (STAINLESS STEEL VERSION)

TYPE	DIMENSIONS (MM)						
	L	T	A	B	C	ØD	E
YS-SS 2 - 5	105	2	24	71	40	9	12
YS-SS 5 - 10	105	3	24	71	45	9	12
YS-SS 10 - 20	110	4	26	75	50	11	13
YS-SS 20 - 35	110	5	26	75	60	11	13
YS-SS 35 - 45	110	5	26	75	80	11	13
YS-SS 45 - 60	118	6	30	79	80	13	15
YS-SS 60 - 80	118	6	30	79	85	13	15
YS-SS 80 - 115	132	8	34	87	85	17	17
YS-SS 115 - 180	143	10	38	95	85	21	19

STATIC LOAD RANGE (KG)	PERMISSIVE DEFORMATION (MM)			MAX TRANSMITTED ACCELERATION AT STATIC LOAD (M/S ²)	
	X	Y	Z	MIN MASS	MAX MASS
2 - 5	55	55	55	250	100
5 - 10	55	55	55	250	130
10 - 20	55	55	55	240	120
20 - 35	55	55	55	220	130
35 - 45	55	55	55	170	130
45 - 60	55	55	55	180	140
60 - 80	55	55	55	130	110
80 - 115	55	55	55	170	120
115 - 180	55	55	55	180	110