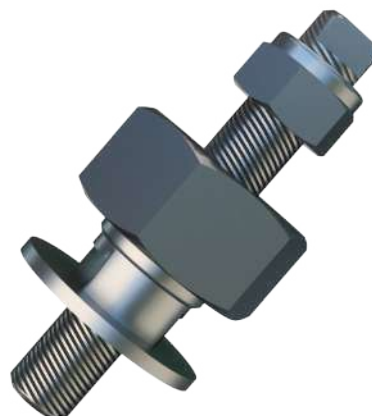


Height Adjusters

Height Adjusters (HA) are available in various sizes to suit the small and medium range of Trelleborg AVS mountings. It allows mounts to be retrofitted to existing installations where original spares are unobtainable.

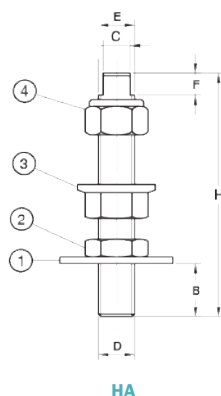
The HA range are made in corrosion protected grade 8 steel. The steel is zinc plated. The Height Adjuster is supplied complete with washer and nut for fastening to the mounting and two nuts and a lock washer for the engine foot fastening. The Height Adjusters allow ease of aligning when installing equipment.

When installing secure the bolt into the mounting, it is recommended to apply thread lock adhesive. For optimum solutions where close coupling Tolerances are required, allow the mountings to settle for 48 hours before final alignment of the engine installation.

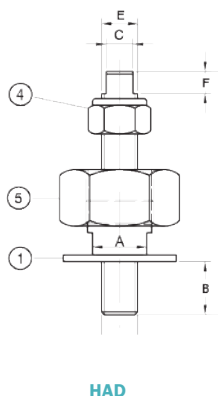


Note: For all applications with Thrust loading, it is recommended that the HAD type height adjusters must be used. On request, Trelleborg AVS application engineers can make the necessary calculations for the Anti Vibration and Shock Systems using Vibration Software. For optimum solutions where close coupling tolerances are required, allow the mountings to settle for 48 hours before final alignment of the engine installation. For securing the bolt into the mounting, it is recommended threadlock be applied.

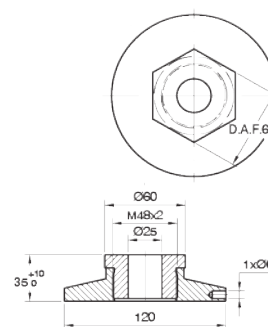
Technical Drawing



HA



HAD



HAD 24/24

Product Data

REFERENCE	DRAWING NO.	PART NO.	DIMENSIONS (mm)							WASHER (1)	HEXAGON THIN NUT (2)	HEXAGON FLANGE NUT (3)	LOCK NUT PLASTIC INSERT (4)	FINE THREAD ADJUSTING UNIT (5)
			H	D	E	A	B	C	F					
HA														
HA 12/12	18-2210A	40-04704	95	M12	M12	-	20	8 A/F	8	37*12*3	M12	M12	M12	-
HA 12/16	38-1600H	40-06068	105	M12	M16	-	20	12 A/F	10	44*15*3	M16	M16	M16	-
HA 16/16	18-2210C	40-04705	110	M16	M16	-	24	12 A/F	10	50*15*3	M16	M16	M16	-
HA 16/20	18-2210D	20-00511	130	M16	M20	-	24	12 A/F	10	56*20*4	M20	M20	M20	-
HA 20/20	18-2210E	40-02515	135	M20	M20	-	30	12 A/F	10	60*21*4	M20	M20	M20	-
HAD														
HAD 12/16	18-2210F	20-00513	105	M12	M16	24 A/F	20	12 A/F	10	44*15*3	-	-	M16	M30*1.5
HAD 16/16	18-2210G	20-00514	110	M16	M16	24 A/F	24	12 A/F	10	50*15*3	-	-	M16	M30*1.5
HAD 16/20	18-2210H	20-00515	130	M16	M20	27 A/F	24	12 A/F	10	56*20*4	-	-	M20	M36*2
HAD 20/20	18-2210J	20-00516	135	M20	M20	27 A/F	30	12 A/F	10	60*21*4	-	-	M20	M36*2
HAD 24/24	18-2210K	20-00517	SEE DRAWING											
-	033 18 710	49018052	135	M12	M20x1,5	-	15	SW8	10	B13 DIN 9021	SW19	-	SW18	SW30
-	033 18 709	49039256	135	M16	M24x1,5	-	20	SW12	10	B17 DIN 9021	SW22	-	SW24	SW36
-	033 18 708	49011255	135	M20	M33x2	-	25	SW15	10	B22 DIN 9021	SW27	-	SW30	SW50
-	033 18 707	49039258	160	M24	M36x1,5	-	30	SW18	10	B26 DIN 9021	SW27	-	SW36	SW55