

# Cushyfloat HT

The Cushyfloat HT (High Thrust) mounting has been developed to meet the increased torque output and higher thrust load requirements of many modern marine power units. By careful design of the rubber section, relatively high degrees of flexibility in the vertical and lateral modes are combined with high stiffness in the longitudinal fore and aft direction, thereby giving good vibration isolation properties and minimum movement under thrust forces.

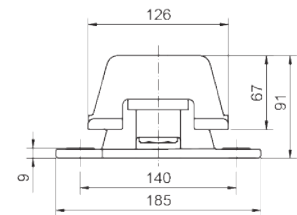
The design incorporates bump and rebound control features which limit excessive movements under shock loading. The mountings have a high inbuilt tensile strength which renders them suitable for the suspension of power units in lifeboat applications. The top gives protection against oil contamination and the protective finish resists corrosion attack. Two designs and different rubber compounds allow loads between 85 and 1070Kg to be accommodated.

**Typical applications:**

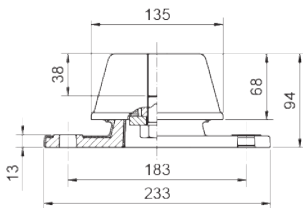
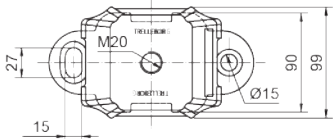
- Marine Engines



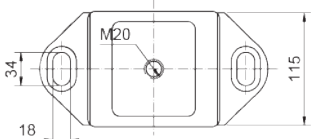
## Technical Drawing



17-2182



17-1990



## Product Data

DRAWING NO.	PRODUCT NO.	HARDNESS (IRHD)	MIN VERTICAL LOAD (N)	MAX. VERTICAL LOAD (N)	STATIC STIFFNESS (N/mm)	MIN DEFLECTION (mm)	MAX DEFLECTION (mm)	MAX. BOLT TORQUE (Nm)
17-2182-1	10-01143	35	846	1397	400	3	5	100
	10-01144	45	1254	2090	1000			
	10-03014	55	2039	3394	960			
	10-02930	65	3007	4995	1530			
17-1990-1	10-01150	45	1498	5708	1600	1	4	100
	10-03146	60	2956	10703	3000			

DRAWING NO.	VERTICAL	LATERAL	LONGITUDINAL
NOMINAL STIFFNESS RATIOS			
17-2182-1	1	0,85	6
17-1990-1	1	0,25	9