

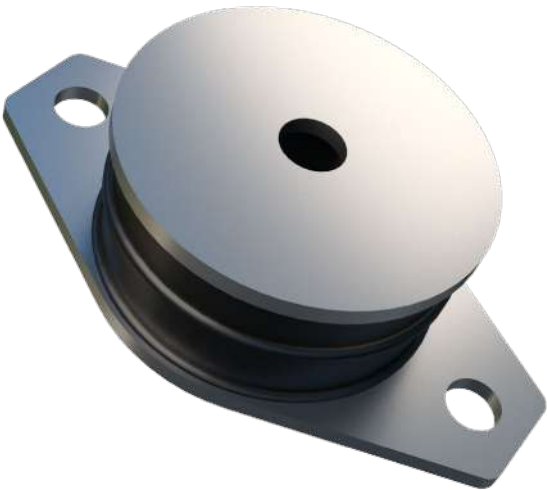
SAW Mount Circular

The metal interleaf incorporated in the design provides a higher compression to shear stiffness ratio, thereby increasing the load capacity in the compression or combined compression and shear modes.

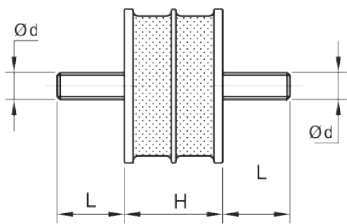
The 17-1780 engine mounting features a void in the rubber section to allow the use of a central snubber device. 17-1780 can be fitted with a rebound washer for mobile applications.

Typical applications:

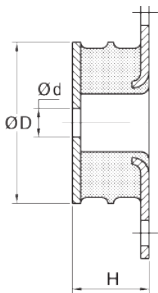
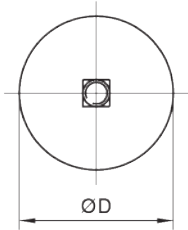
- Vibratory rollers
- Small vibrating screens
- Small engines



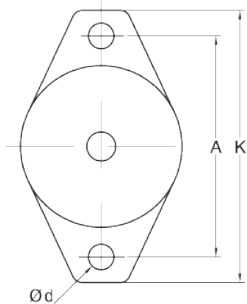
Technical Drawing



17-1392



17-1780



Product Data

DRAWING NO.	PART NO.	HARDNESS (IRHD)	DIMENSIONS (mm)								MAX. LOAD (N)	
			ØD	H	Ød	L	A	K	G	h	COMPRESSION	SHEAR
17-1392	10-00492	45	57	37	M10	25	-	-	-	-	1200	500
	10-00493	60									2500	700
17-1780	10-00577	45	95	45	-	-	130	160	17	15	1800	1350
	10-00578	60									3500	1600