

Cushyfloat

The Cushyfloat mount is a general purpose unit designed to provide effective isolation of vibration and noise arising from both static and mobile equipment. Originally designed for use with marine engines, the Cushyfloat is a simple to install, compact, low profile mounting. It combines 3 way control of the suspended equipment with relatively large static deflections where the rubber is loaded in shear and compression.

The design incorporates bump and rebound control features which limits excessive movement under shock loading. Top metal gives protection against oil contamination and the protective finish resists corrosion attack. Propeller thrust on marine applications is accommodated. There are four sizes in the standard range with varying degrees of rubber hardness catering for point loads from 32Kg to 3000kg. Natural frequencies as low as 8Hz are possible.

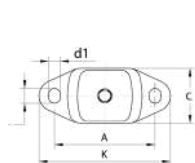


Typical applications:

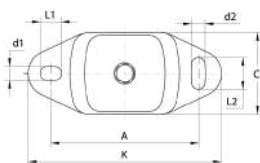
- Marine/Industrial vehicle engines
- Generator sets
- Pumps and compressors

* When used in marine engine application when thrust forces are involved, the maximum load capacity is substantially reduced.

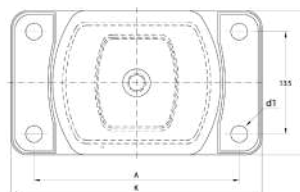
Technical Drawing



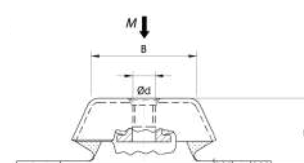
17-1600



17-1609, 17-1657



17-1841



SIDE VIEW

Product Data

DRAWING NO.	PART NO.	HARDNESS (IRHD)	DIMENSIONS (mm)										MAX. LOAD (N)		MAX. THRUST LOAD (N)	VERTICAL STIFFNESS (N/mm)	MAX. BOLT TORQUE (Nm)
			B	C	A	K	H	d ₁	L ₁	d ₂	L ₂	Ød	VERTICAL	*VERTICAL WITH THRUST			
17-1600-1	10-00535	45	62	60	100	120	38-40.5	11	14	11	14	M12	500	350	370	90	25
	10-00536	55											650	550	560	135	
	10-00537	65											1000	800	830	202	
	10-04525	75											1450	1150	1200	290	
17-1609-1	10-00545	45	76	75	140	183	49	13	20	13	30	M16	1500	950	1000	220	50
	10-00546	55											2100	1400	1500	330	
	10-00547	65											3000	2100	2300	495	
	10-00548	75											4500	3150	3300	883	
17-1657-1	10-00557	45	72	112,5	182	228	70	18	26	18	34	M20	3000	2500	2800	550	100
	10-00558	55											5200	3700	4200	725	
	10-00559	65											8000	5600	6400	1075	
	10-00560	75											10000	7000	11800	1637	
17-1841-2	10-00605	40	120	190	270	330	112	22	-	-	-	M24	9500	6300	5300	1040	200
	10-00606	50											14000	9450	7100	1390	
	10-00607	60											22000	15750	12500	2450	
	10-00608	70											30000	21000	18000	3500	

DRAWING NO.	VERTICAL	LATERAL	LONGITUDINAL
17-1600-1	1	0,75	2,5
17-1609-1	1	0,7	2,7
17-1657-1	1	0,85	2,6
17-1847-2	1	0,6	2,3